

# “Emerging Competition and Affordability Issues Impacting Access to Broadband Networks & Services”

Presented by: Charles Gabriel Gentil  
January 28th 2015

# Barriers to Broadband Access

- Capital Investment to deploy Network
- CPEs or such other device costs
- Cost of Services, equipments and billing methods
- Mobile operators influence on regulator
- Regulator is not pro actively allowing competition, which hinder services and new players

# Emerging Competition

- Ad Hoc Wireless Network cost effectiveness
- using unlicensed spectrum
- Network Designs' and Implementations
- All IP Network to support many services
- New approach to distribution and deployment
- Penetration and Reach

# Affordability

- Acquisition cost to Customers to connect lower than traditional
- Better Billing and Payment methods.
- Design and Technology
- Competition in WISP sector.
- WIFI Devices and less costly to cellular.
- Population Reach or coverage



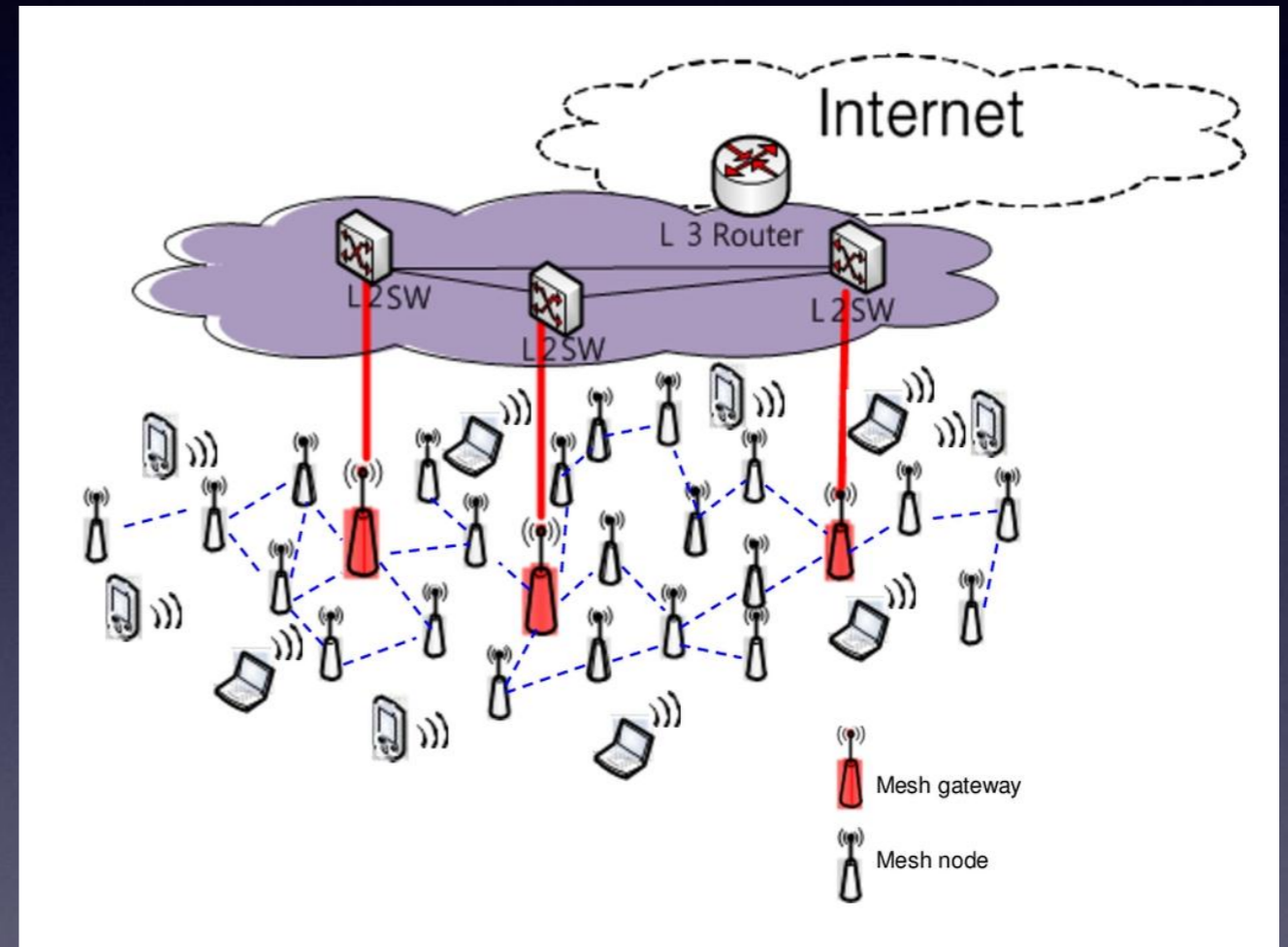
# Access to Broadband?

- Municipal WIFI Connection
- Creation of Social and Governmental Programs
- Applications and Services
- Scalability, Implementation and Adaptation
- Mobility

# WIIP

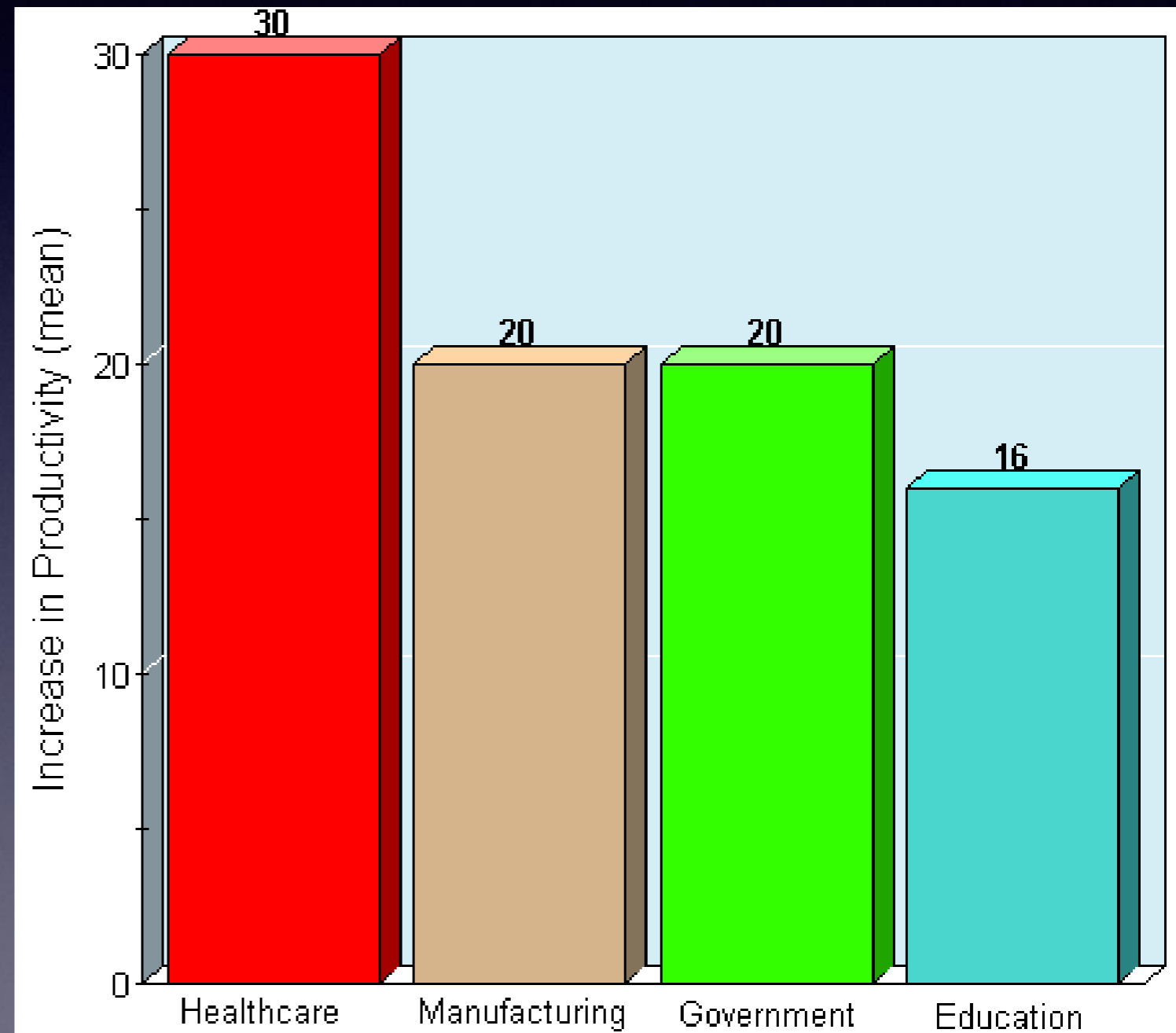
## *Wireless Internet and infrastructure Provider*

- A Wireless Mesh Network Setup using 2.4GHz spectrum to serve clients and 5.8GHz for back-hauling.
- Providing a WIFI connectivity solution to all Under this Cloud WIFI.
- Infrastructure for added values



# The Beneficiaries of this Network

- Health Care
- Education
- Business Solution
- Financial
- Public Safety
- Social









# Why WIIP in Haiti ?

After the Earthquake of 2010; Haiti needs an emergency communications system for first responders to save lives.

Broadband has an impact on growth for the longterm

According to the IDB, Haiti is the 26th and last place in the area with 1.71 index of broadband penetration in LAC.

According to ITU, given in 2012, only 10.9% of Haitian population has access to internet, the lowest rate of the LAC.

Haiti is ranked 145 of 169 in human development lowest in western hemisphere.

# Advantages of the Network

- Total connectivity to all WIFI enabled devices.
- Cost effectiveness
- Billing and “Freemium” services.
- Infrastructure design
- Implementation and Network speed
- Job Creation



